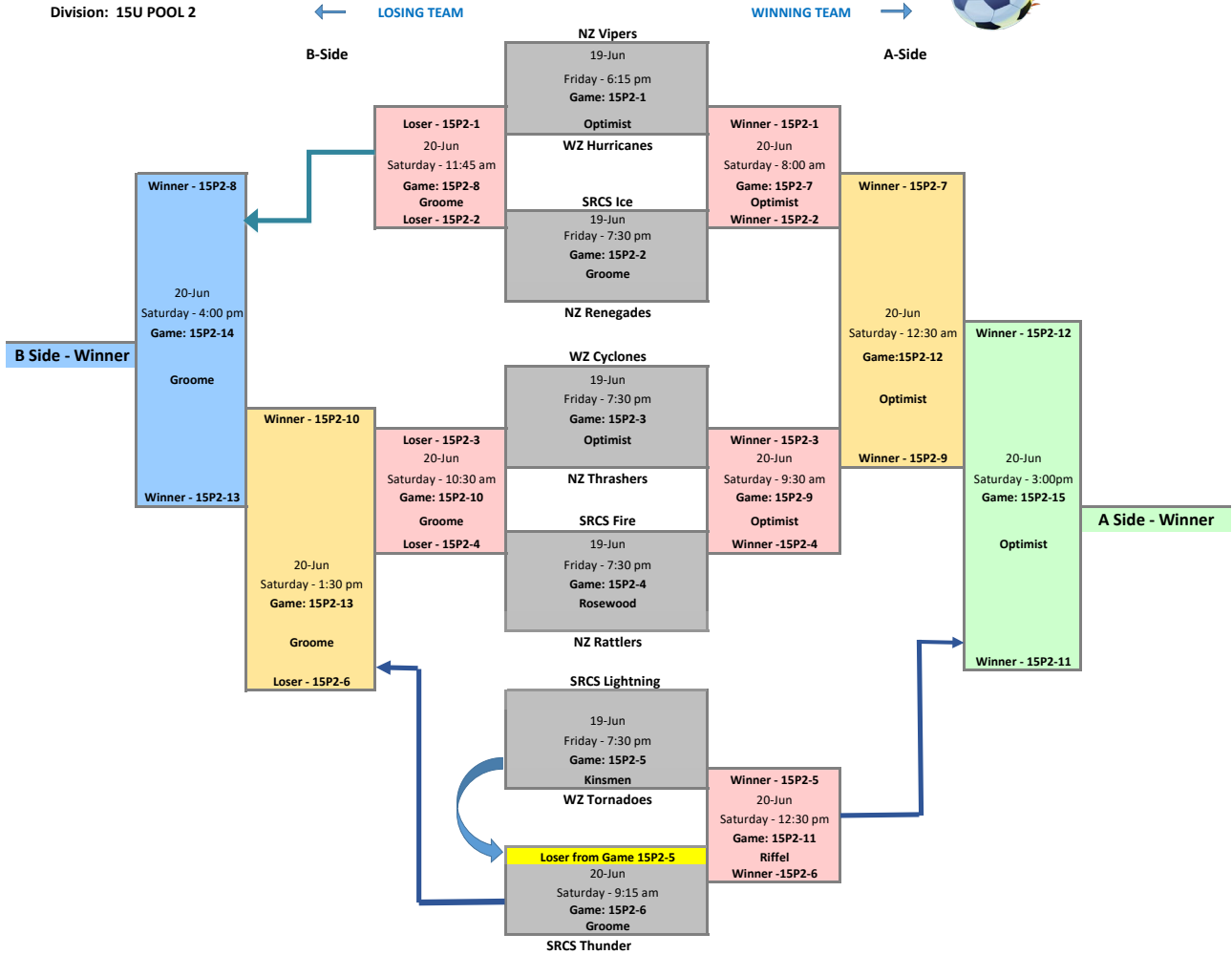


Outdoor Soccer Tournament

June 19 & 20, 2026

Division: 15U POOL 2



**FIELDS**

- OP. Optimist Park (Dewdney Ave off Grey Street - West of Lewvan; near Luther High)
- Q. Riffel High School - 5757 Rochdale Blvd
- RP. Rosewood Park (1300 N Courtney Street - Plainsview School)
- S. Henry Janzen School (222 Rink Avenue)
- GR. Groome Park (4420 Harbour Landing Dr)
- Realtors West - 222 Sunset Drive (Behind Optimist Arena)
- Kinsmen Park South Athletic Field (3310 Lakeview Ave)

The game is divided into two equal halves of 20 minutes with 5 minutes at half time. If game is still tied then proceed to 5 minute Overtime and first goal wins. If still tied then proceed to Shootout (best of 5 kicks, if still tied then alternating one and one until tie is broken).